

**PRVI KAT- STAN - 101 - V3**

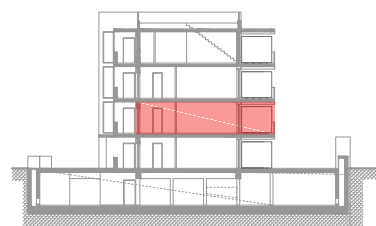
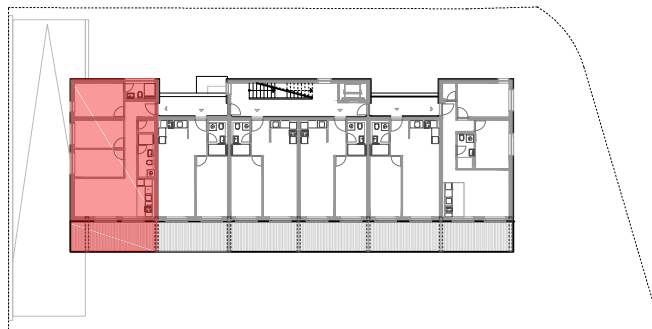
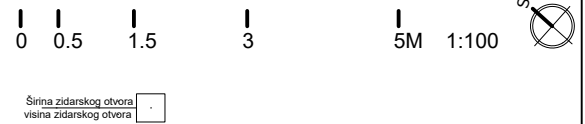
	površina m <sup>2</sup>	koef.	NETTO m <sup>2</sup>
1 Dnevni boravak / blagovaonica	16.21	1.00	16.21
2 Kuhinja	4.02	1.00	4.02
3 Hodnik	8.29	1.00	8.29
4 Kupaonica	4.50	1.00	4.50
5 Kupaonica	2.95	1.00	2.95
6 Soba	9.27	1.00	9.27
7 Soba	11.12	1	11.12
8 Soba	9.27	1.00	9.27
9 Spremište	1.35	1.00	1.35
10 Natkrivena terasa	18.00	0.50	9.00
11 Garažna parkirna mjesta br. 10 i 11	28.50	0.50	14.25

**UKUPNO**

**113.48**

**90.23**

**Tlocrt stana 101-V3 - PRVI KAT**



Položaj u zgradi

